

# SPEC SHEET + MEASUREMENTS

PORT AUTHORITY.

Port Authority® Women's Denim Jacket. L7620

## Product photo



Classic denim jacket in a modern fit for her.

- 13.75-ounce, 100% garment washed indigo denim
- Two button-through flap chest pockets
- Button cuffs
- Front pockets

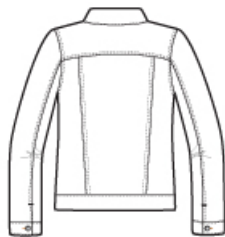
## CARE INSTRUCTIONS

Machine wash cold separately, do not bleach. Tumble dry. Cool iron if necessary. Do not dry clean if printed.

## Sketches



front



back

# SPEC SHEET + MEASUREMENTS

PORT AUTHORITY

Port Authority® Women's Denim Jacket. L7620

## PRODUCT MEASUREMENTS

	XS	S	M	L	XL	XXL	3XL	4XL
Size	2	4/6	8/10	12/14	16/18	20/22	24/26	28/30
Bust	18	19	20	21 1/2	23	24 1/2	26 1/2	28 1/2
Body Length at Front	23 1/2	24	24 1/2	25 1/2	26 1/2	27 1/2	28	28 1/2
Sleeve From Shoulder	32 1/2	33	33 1/2	34 1/4	35	35 3/4	36 1/4	36 3/4

**Bust:** Measured across the chest one inch below armhole when laid flat.

**Body Length at Front:** Measure from high point shoulder to lowest point of hem at front.

**Sleeve From Shoulder:** Measured from high point of shoulder to finished hem at sleeve.

## SIZE CHARTS

	XS	S	M	L	XL	XXL	3XL	4XL
Size	2	4/6	8/10	12/14	16/18	20/22	24/26	28/30
Bust	32-34	35-36	37-38	39-41	42-44	45-47	48-51	52-55

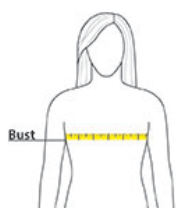
# SPEC SHEET + MEASUREMENTS

PORT AUTHORITY.

Port Authority® Women's Denim Jacket. L7620

## HOW TO MEASURE

---



### **BUST**

Measure under the arm and around the fullest part of the bust with arms down, keeping tape horizontal.

## COLORS

---



Denim Blue  
PMS 2380C